

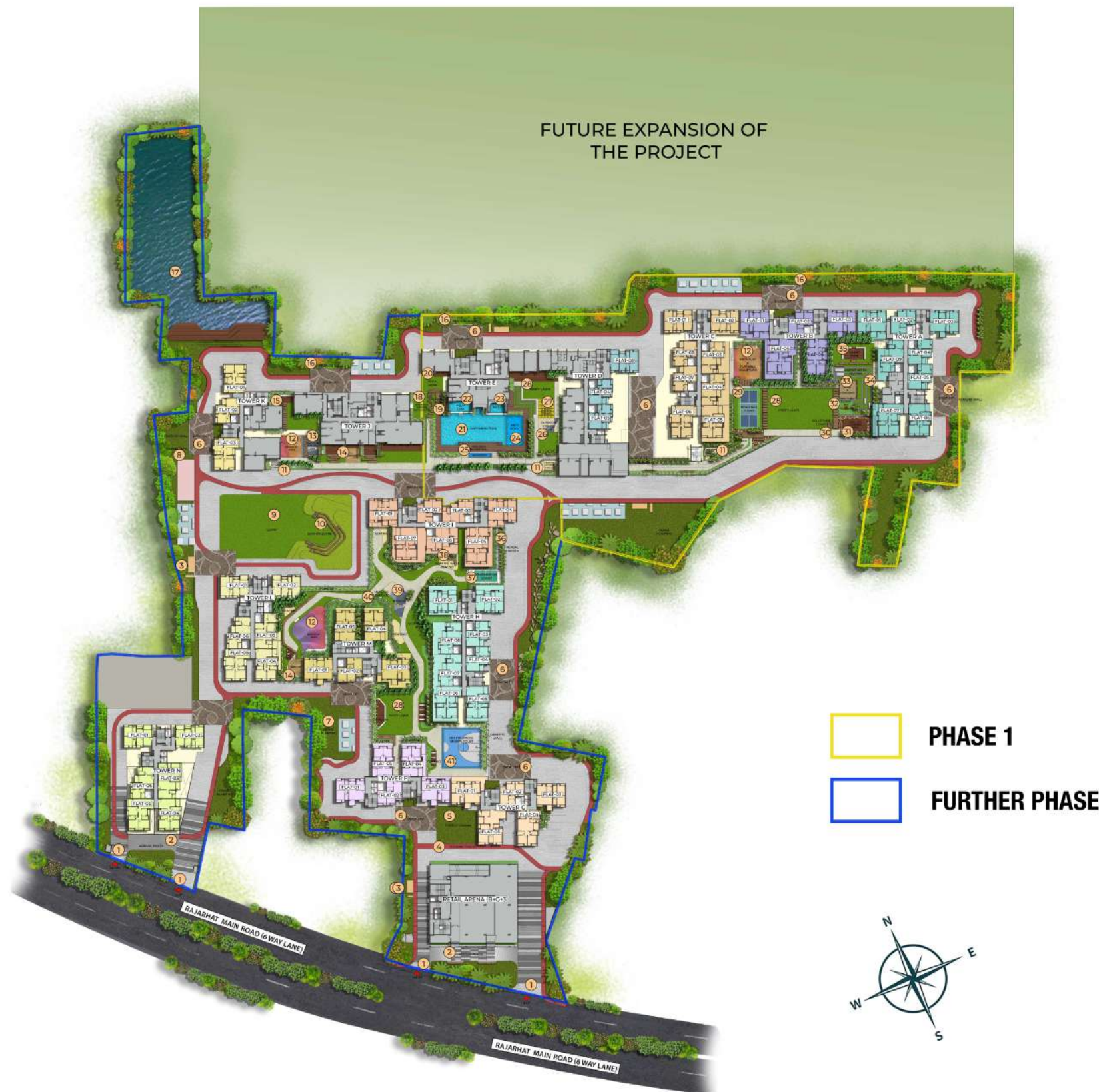
OPTIMA

LIVE OPTIMALLY

TOWER G - FLOOR PLAN

Phase 2 - WBRERA/P/NOR/2025/002447 | rera.wb.gov.in

MASTER PLAN



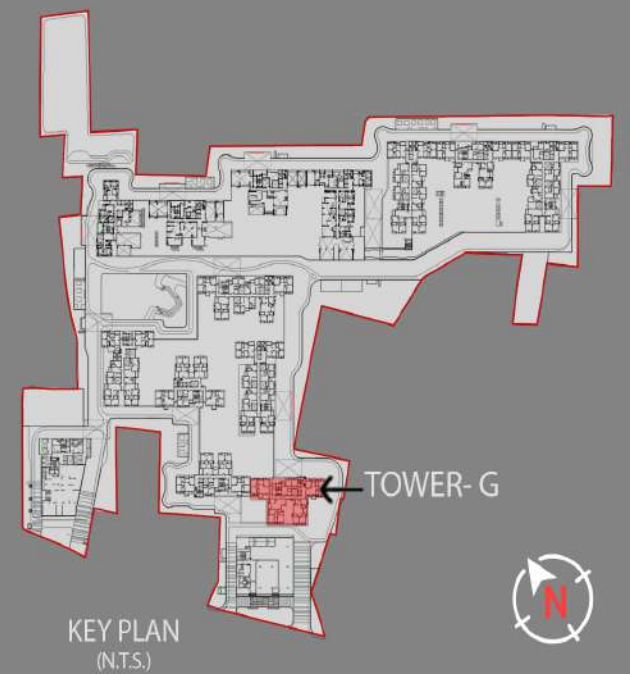
LEGENDS

- 1.Entry/Exit
- 2.Arrival plaza
- 3.Space For DG
- 4.Jogging Track
- 5.Forest Cabana
- 6.Drop Off
- 7.Dense Planting
- 8.Stamp Path
- 9.Lawn
- 10.Amphitheatre
- 11.Senior Citizen Corner
- 12.Kid's Play Area
- 13.Outdoor Fitness Gym
- 14.Sandpit
- 15.Barbecue Area
- 16.Feature Wall
- 17.Water Body
- 18.Hammock Garden
- 19.Reflexology Pathway
- 20.Yoga Lawn
- 21.Swimming Pool

- 22.Aqua Gym
- 23.Jacuzzi
- 24.Kid's Pool
- 25.Pool Deck
- 26.Outdoor Fitness Gym
- 27.Adda Zone
- 28.Party Lawn
29. Pickle Ball Court
- 30.Sculpture Court
- 31.Look- Out Covered Deck
- 32.Flower Bed
- 33.Stage And Stargazing
- 34.Amphitheatre Seating
- 35.Silent Zone
- 36.Herbal Garden
- 37.Badminton Court
- 38.Bonfire With Seating
- 39.Fitness Zone
- 40.Healing Garden
- 41.Multipurpose Sports Court
42. Day care creche



TOWER G - FLAT 1



TOWER G TYPICAL FLOOR PLAN

TOWER G - FLAT 2





TOWER G - FLAT 3



TOWER G - FLAT 4

TOWER G - FLAT 5



TOWER G FIRST FLOOR PODIUM LEVEL



Architectural floor plan of a multi-story residential building, showing five flats (01-05) and various common areas. The plan includes room layouts, dimensions, and labels for structural elements like walls, doors, and stairs.

Vertical Section (Left): Shows levels 2-76 to 2-80. Rooms include NON-COMBUSTIBLE STORE (14-3'x8-4"), NON-COMBUSTIBLE STORE (7-1'x11-8"), and NON-COMBUSTIBLE STORE (7-3'x11-8").

Horizontal Section (Bottom): Shows levels 2-81 to 2-85. Rooms include NON-COMBUSTIBLE STORE (7-1'x11-8"), NON-COMBUSTIBLE STORE (7-3'x11-8"), and NON-COMBUSTIBLE STORE (7-3'x11-8").

Flat 01: Includes a 11'-7'x2'-2" NON-COMBUSTIBLE STORE, 7-1'x11-8" NON-COMBUSTIBLE STORE, 7-3'x11-8" NON-COMBUSTIBLE STORE, and a 11'-7'x2'-2" NON-COMBUSTIBLE STORE.

Flat 02: Includes a 11'-7'x2'-2" NON-COMBUSTIBLE STORE, 7-1'x11-8" NON-COMBUSTIBLE STORE, 7-3'x11-8" NON-COMBUSTIBLE STORE, and a 11'-7'x2'-2" NON-COMBUSTIBLE STORE.

Flat 03: Includes a 11'-7'x2'-2" NON-COMBUSTIBLE STORE, 7-1'x11-8" NON-COMBUSTIBLE STORE, 7-3'x11-8" NON-COMBUSTIBLE STORE, and a 11'-7'x2'-2" NON-COMBUSTIBLE STORE.

Flat 04: Includes a 11'-7'x2'-2" NON-COMBUSTIBLE STORE, 7-1'x11-8" NON-COMBUSTIBLE STORE, 7-3'x11-8" NON-COMBUSTIBLE STORE, and a 11'-7'x2'-2" NON-COMBUSTIBLE STORE.

Flat 05: Includes a 11'-7'x2'-2" NON-COMBUSTIBLE STORE, 7-1'x11-8" NON-COMBUSTIBLE STORE, 7-3'x11-8" NON-COMBUSTIBLE STORE, and a 11'-7'x2'-2" NON-COMBUSTIBLE STORE.

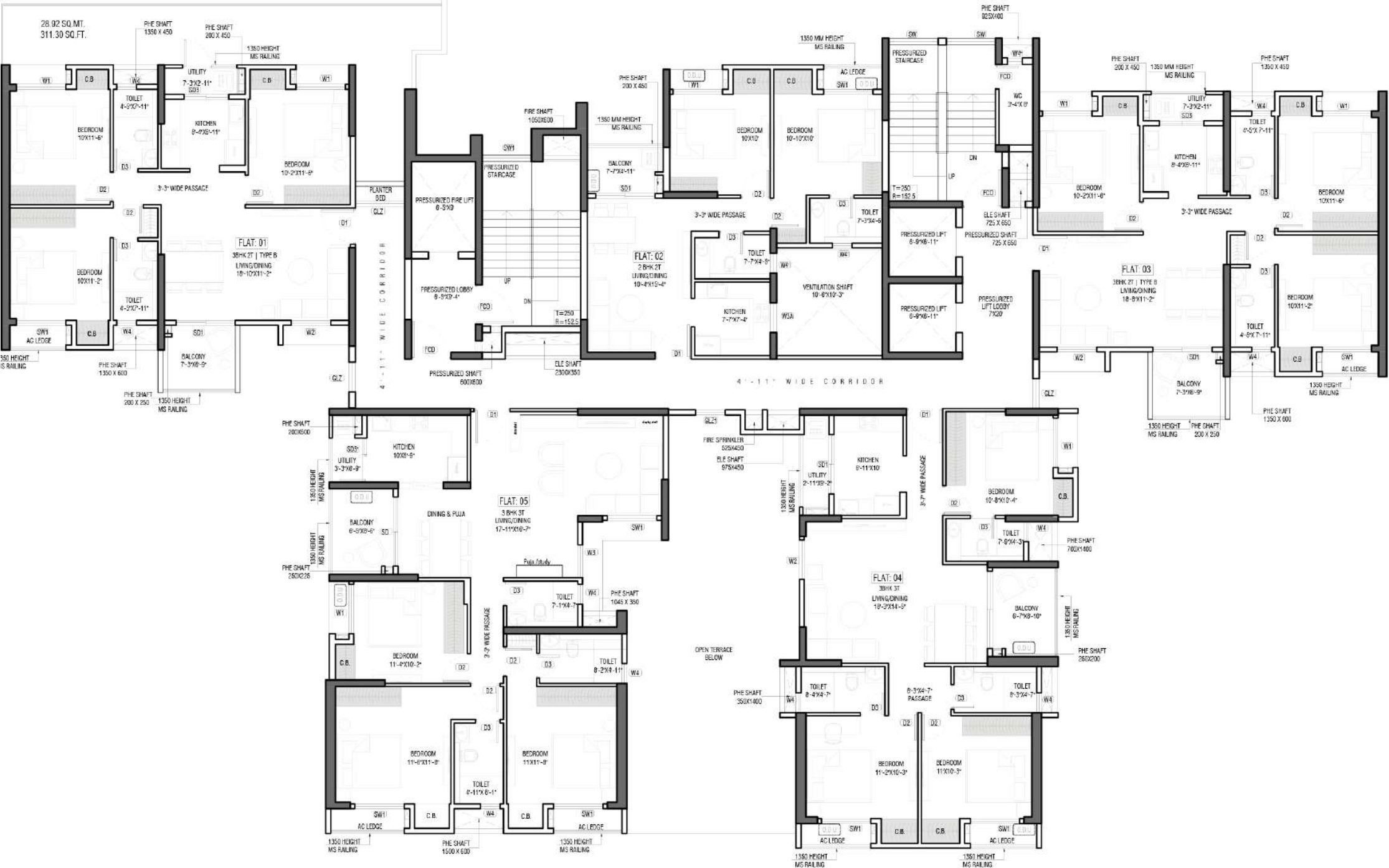
Common Areas: Includes a 11'-7'x2'-2" NON-COMBUSTIBLE STORE, 7-1'x11-8" NON-COMBUSTIBLE STORE, 7-3'x11-8" NON-COMBUSTIBLE STORE, and a 11'-7'x2'-2" NON-COMBUSTIBLE STORE.

Structural Elements: Includes walls, doors, stairs, and structural notes.

**TOWER G
THIRD FLOOR
PODIUM LEVEL**



**TOWER G
FOURTH FLOOR
PODIUM LEVEL**



TOWER G - AREA CHART

TOWER NO.	FLAT	FLOOR	APARTMENT TYPE	CARPET AREA	BALCONY + UTILITY AREA (SQFT)	BUILT-UP AREA (SQFT.)	SUPER BUILT UP AREA (SQFT.)	TERRACE	FINAL SUPER BUILT-UP AREA(SQ.FT)
				(FLAT)		FLAT		50% CHARGEABLE AREA (SQFT.)	
				(WITHOUT BALCONY BUT INCLUDE C.B. AS PER RERA) (SQFT.)					
TOWER - G (1ST FLOOR)	3	1st floor	3 BHK+2T	769	94	964	1285	0	1285
	4	1st floor	3 BHK+3T	848	120	1104	1472	144	1616
	5	1st floor	3 BHK+3T	983	111	1237	1649	195	1844
TOWER - G (2ND FLOOR)	2	2nd floor	2 BHK+2T	557	55	699	932	0	932
	3	2nd floor	3 BHK+2T	769	94	964	1285	0	1285
	4	2nd floor	3 BHK+3T	848	120	1104	1472	0	1472
	5	2nd floor	3 BHK+3T	983	111	1237	1649	0	1649
TOWER - G (3RD FLOOR)	2	3rd floor	2 BHK+2T	557	55	699	932	0	932
	3	3rd floor	3 BHK+2T	769	94	964	1285	0	1285
	4	3rd floor	3 BHK+3T	848	120	1104	1472	0	1472
	5	3rd floor	3 BHK+3T	983	111	1237	1649	0	1649
TOWER - G (4TH FLOOR)	1	4th floor	3 BHK+2T	776	94	962	1282	156	1438
	2	4th floor	2 BHK+2T	561	55	694	926	0	926
	3	4th floor	3 BHK+2T	775	94	962	1282	0	1282
	4	4th floor	3BHK+3T	865	123	1103	1470	0	1470
	5	4th floor	3BHK+3T	995	114	1237	1649	0	1649
TOWER - G (5TH-18TH - TYPICAL)	1	Typical	3 BHK+2T	776	94	962	1282	0	1282
	2	Typical	2 BHK+2T	561	55	694	926	0	926
	3	Typical	3 BHK+2T	775	94	962	1282	0	1282
	4	Typical	3BHK+3T	865	123	1103	1470	0	1470
	5	Typical	3BHK+3T	995	114	1237	1649	0	1649