

TYPICAL AREA PLAN
TYPE B

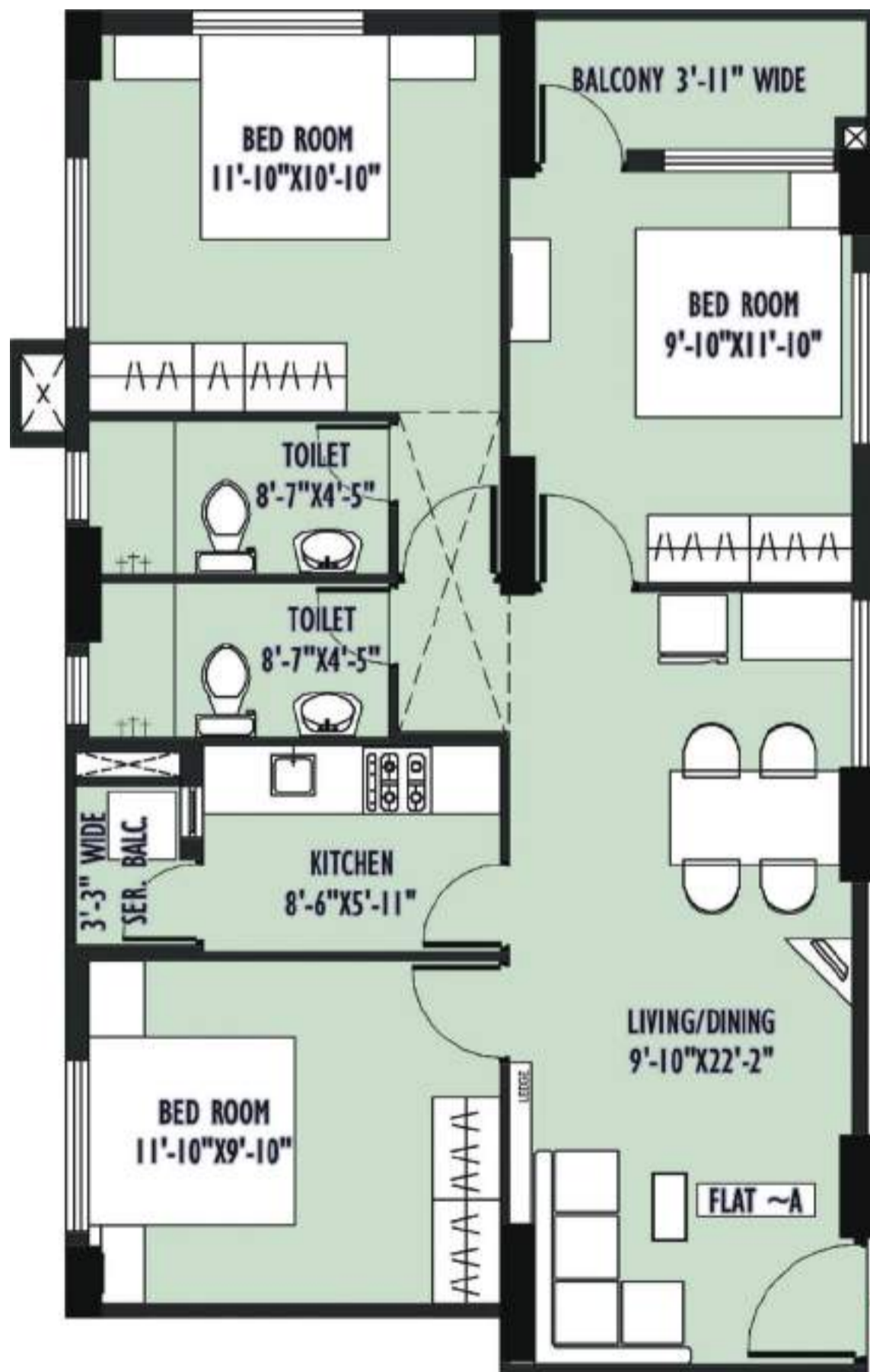


TYPE B - BLOCK 28 & 29 1ST - 12TH FLOOR TYPICAL AREA PLAN



Flat no.	Flat Type	Carpet Area (Sq. ft.)	Balcony (Sq. ft.)	Total Area (Sq. ft.)	Built up Area (Sq. ft.)	Standard Built Up Area (Sq. ft.)
A	3BHK + 2TOI	731	48	779	880	1143
B	3BHK + 2TOI	676	35	711	813	1056
C	3BHK + 2TOI	676	35	711	813	1056
D	3BHK + 2TOI	731	48	779	880	1143
E	3BHK + 2TOI	701	48	749	845	1097
F	3BHK + 2TOI	676	35	711	813	1056
G	3BHK + 2TOI	676	35	711	813	1056
H	3BHK + 2TOI	701	48	749	845	1097

**TYPE B - UNIT PLAN
FLAT A & D**



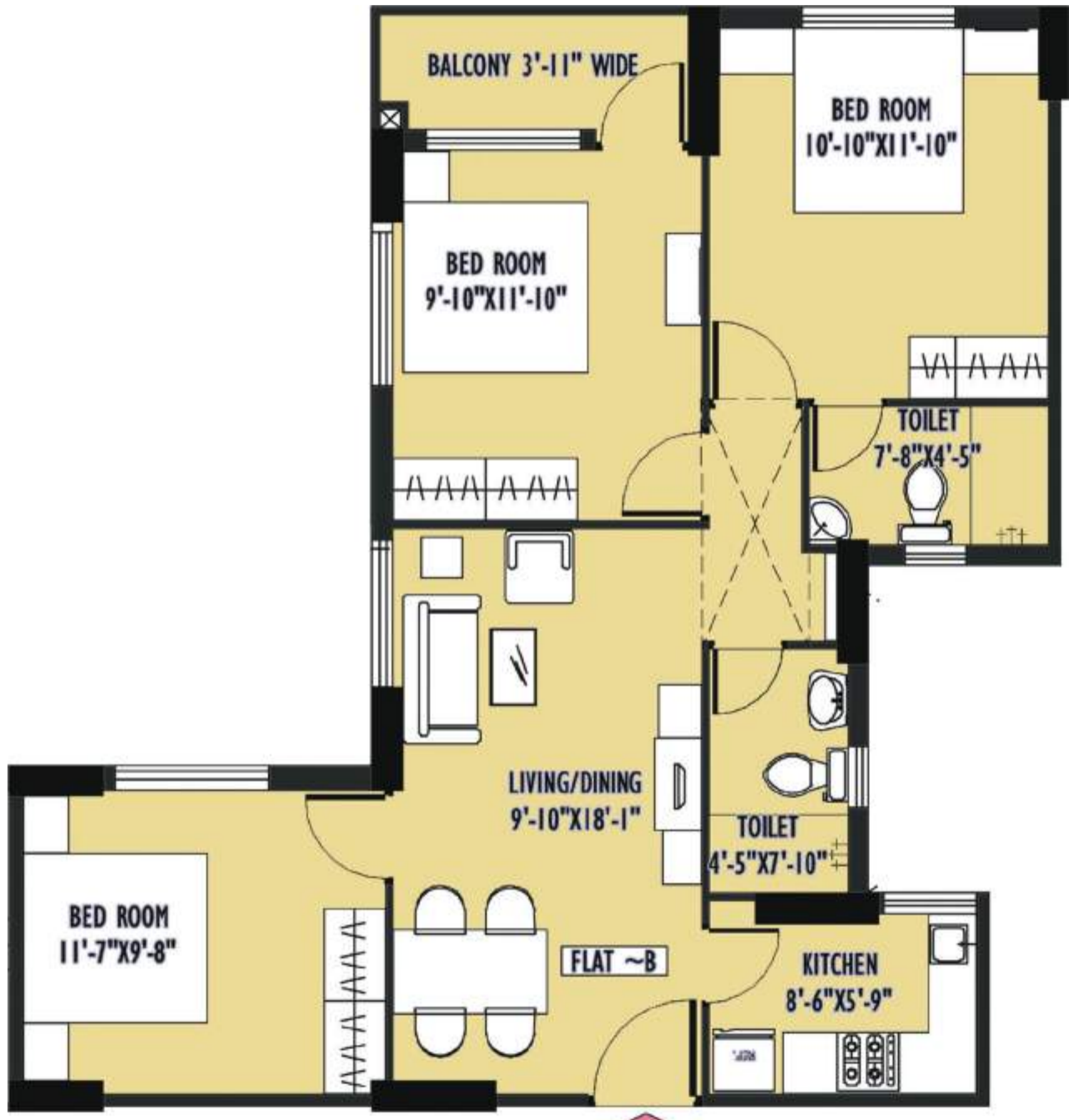
Flat no.	Flat Type	Carpet Area (Sq. ft.)	Balcony (Sq. ft.)	Total Area (Sq. ft.)	Built up Area (Sq. ft.)	Standard Built Up Area (Sq. ft.)
A	3BHK + 2TOI	731	48	779	880	1143
D	3BHK + 2TOI	731	48	779	880	1143

TYPE B - ISOMETRIC PLAN FLAT A & D



Flat no.	Flat Type	Carpet Area (Sq. ft.)	Balcony (Sq. ft.)	Total Area (Sq. ft.)	Built up Area (Sq. ft.)	Standard Built Up Area (Sq. ft.)
A	3BHK + 2TOI	731	48	779	880	1143
D	3BHK + 2TOI	731	48	779	880	1143

TYPE B - UNIT PLAN FLAT B, C, F & G



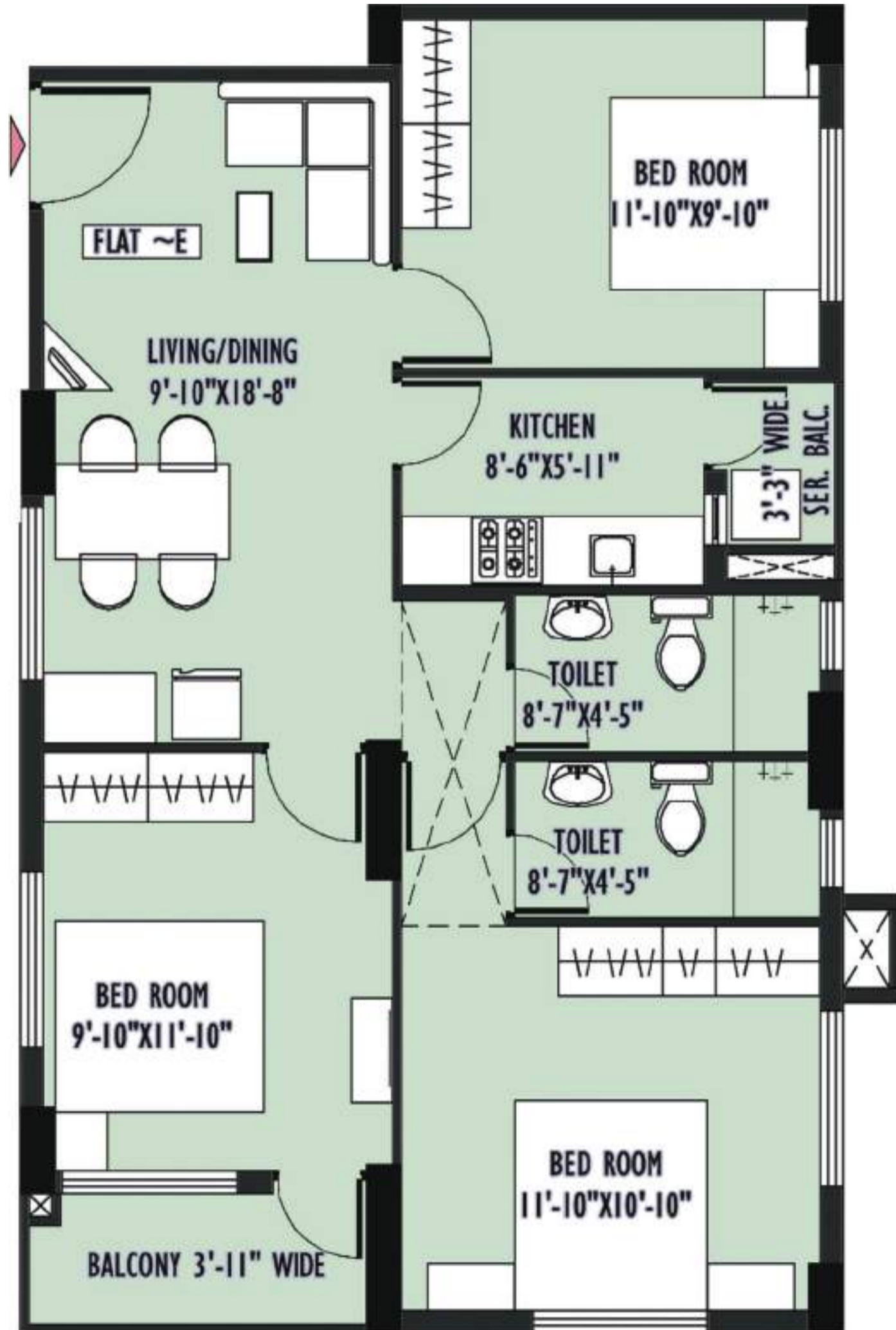
Flat no.	Flat Type	Carpet Area (Sq. ft.)	Balcony (Sq. ft.)	Total Area (Sq. ft.)	Built up Area (Sq. ft.)	Standard Built Up Area (Sq. ft.)
B	3BHK + 2TOI	676	35	711	813	1056
C	3BHK + 2TOI	676	35	711	813	1056
F	3BHK + 2TOI	676	35	711	813	1056
G	3BHK + 2TOI	676	35	711	813	1056

TYPE B - ISOMETRIC PLAN FLAT B, C, F & G



Flat no.	Flat Type	Carpet Area (Sq. ft.)	Balcony (Sq. ft.)	Total Area (Sq. ft.)	Built up Area (Sq. ft.)	Standard Built Up Area (Sq. ft.)
B	3BHK + 2TOI	676	35	711	813	1056
C	3BHK + 2TOI	676	35	711	813	1056
F	3BHK + 2TOI	676	35	711	813	1056
G	3BHK + 2TOI	676	35	711	813	1056

TYPE B - UNIT PLAN
FLAT E & H



Flat no.	Flat Type	Carpet Area (Sq. ft.)	Balcony (Sq. ft.)	Total Area (Sq. ft.)	Built up Area (Sq. ft.)	Standard Built Up Area (Sq. ft.)
E	3BHK + 2TOI	701	48	749	845	1097
H	3BHK + 2TOI	701	48	749	845	1097

TYPE B - UNIT PLAN FLAT E & H



Flat no.	Flat Type	Carpet Area (Sq. ft.)	Balcony (Sq. ft.)	Total Area (Sq. ft.)	Built up Area (Sq. ft.)	Standard Built Up Area (Sq. ft.)
E	3BHK + 2TOI	701	48	749	845	1097
H	3BHK + 2TOI	701	48	749	845	1097