

TYPICAL AREA PLAN  
TYPE A





## TYPE A - BLOCK 39 1ST FLOOR TYPICAL AREA PLAN



Flat no.	Flat Type	Carpet Area (Sq. ft.)	Balcony (Sq. ft.)	Total Area (Sq. ft.)	Built up Area (Sq. ft.)	Standard Built Up Area (Sq. ft.)	Terrace Area (Sq.ft.) 50 % Chargeable
B	3BHK + 2TOI	816	69	885	1006	1306	128
C	3BHK + 2TOI	827	69	896	1019	1323	136

## TYPE A - BLOCK 39

### 2ND FLOOR TYPICAL AREA PLAN



Flat no.	Flat Type	Carpet Area (Sq. ft.)	Balcony (Sq. ft.)	Total Area (Sq. ft.)	Built up Area (Sq. ft.)	Standard Built Up Area (Sq. ft.)	Terrace Area (Sq.ft.) 50 % Chargeable
A	3BHK + 2TOI	827	69	896	1019	1323	334
B	3BHK + 2TOI	816	69	885	1006	1306	0
C	3BHK + 2TOI	827	69	896	1019	1323	0
D	3BHK + 2TOI	816	69	885	1006	1306	314



## TYPE A - BLOCK 39

### 3RD TO 12TH FLOOR TYPICAL AREA PLAN



Flat no.	Flat Type	Carpet Area (Sq. ft.)	Balcony (Sq. ft.)	Total Area (Sq. ft.)	Built up Area (Sq. ft.)	Standard Built Up Area (Sq. ft.)	Terrace Area (Sq.ft.) 50 % Chargeable
A	3BHK + 2TOI	827	69	896	1019	1323	0
B	3BHK + 2TOI	816	69	885	1006	1306	0
C	3BHK + 2TOI	827	69	896	1019	1323	0
D	3BHK + 2TOI	816	69	885	1006	1306	0

## TYPE A - BLOCK 36, 37, 38 & 40 1ST FLOOR TYPICAL AREA PLAN



Flat no.	Flat Type	Carpet Area (Sq. ft.)	Balcony (Sq. ft.)	Total Area (Sq. ft.)	Built up Area (Sq. ft.)	Standard Built Up Area (Sq. ft.)	Terrace Area (Sq.ft.) 50 % Chargeable
A	3BHK + 2TOI	827	69	896	1019	1323	136
B	3BHK + 2TOI	816	69	885	1006	1306	128
C	3BHK + 2TOI	827	69	896	1019	1323	136
D	3BHK + 2TOI	816	69	885	1006	1306	128

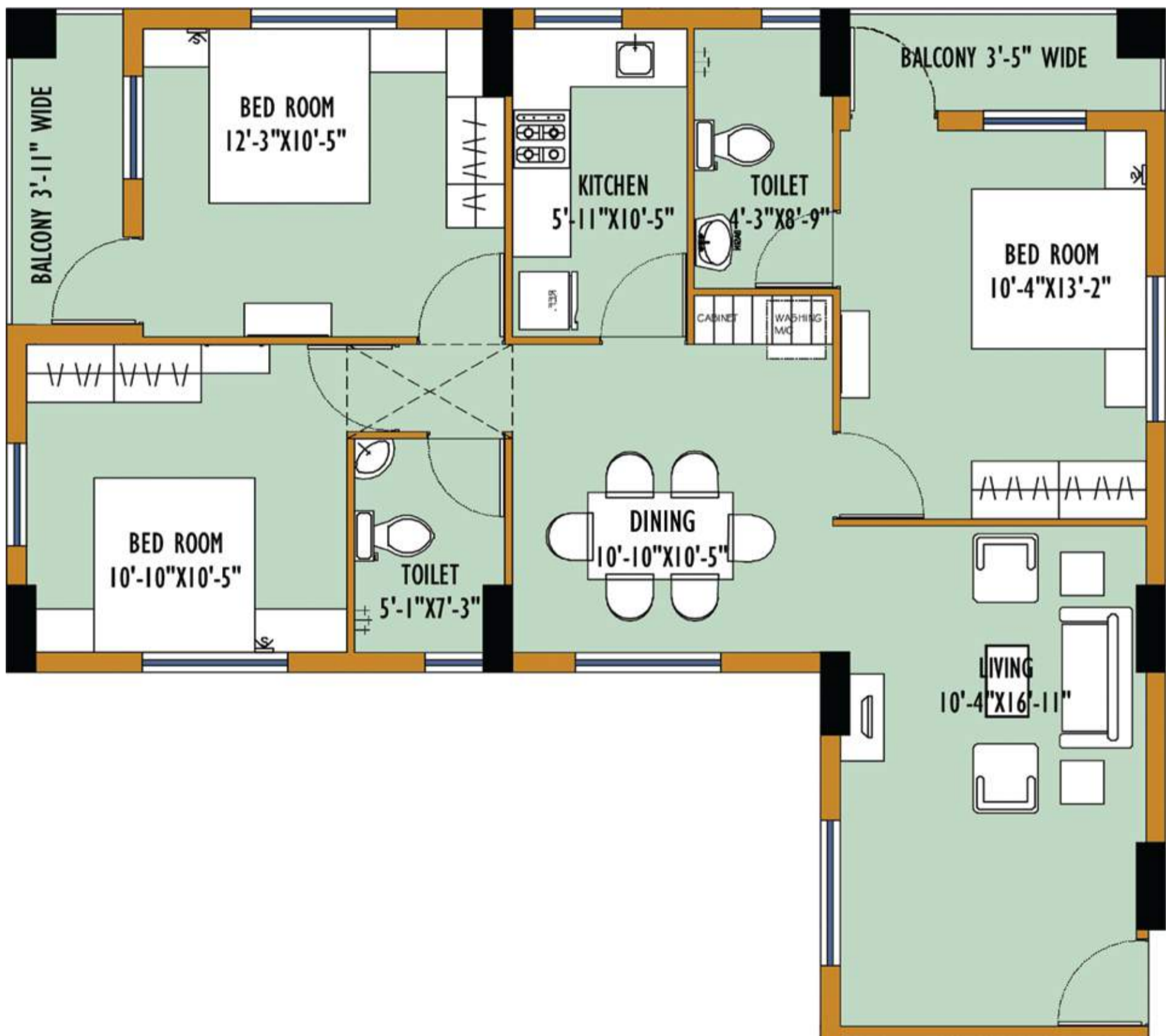


## TYPE A - BLOCK 36, 37, 38 & 40 2ND - 12TH FLOOR TYPICAL AREA PLAN



Flat no.	Flat Type	Carpet Area (Sq. ft.)	Balcony (Sq. ft.)	Total Area (Sq. ft.)	Built up Area (Sq. ft.)	Standard Built Up Area (Sq. ft.)	Terrace Area (Sq.ft.) 50 % Chargeable
A	3BHK + 2TOI	827	69	896	1019	1323	0
B	3BHK + 2TOI	816	69	885	1006	1306	0
C	3BHK + 2TOI	827	69	896	1019	1323	0
D	3BHK + 2TOI	816	69	885	1006	1306	0

## TYPE A - UNIT PLAN FLAT A & C



Flat no.	Flat Type	Carpet Area (Sq. ft.)	Balcony (Sq. ft.)	Total Area (Sq. ft.)	Built up Area (Sq. ft.)	Standard Built Up Area (Sq. ft.)
A	3BHK + 2TOI	827	69	896	1019	1323
C	3BHK + 2TOI	827	69	896	1019	1323



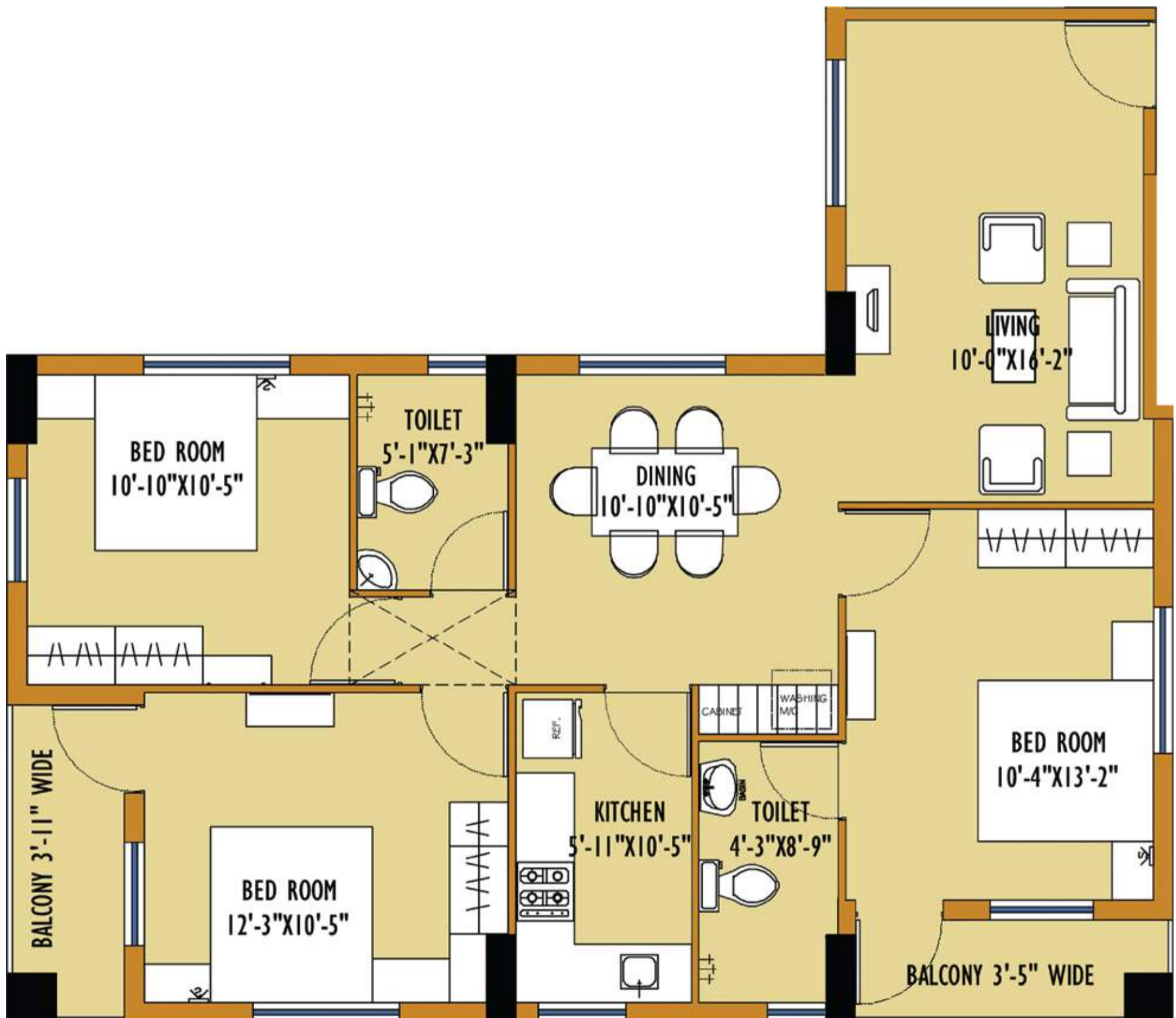
## TYPE A - ISOMETRIC PLAN FLAT A & C



Flat no.	Flat Type	Carpet Area (Sq. ft.)	Balcony (Sq. ft.)	Total Area (Sq. ft.)	Built up Area (Sq. ft.)	Standard Built Up Area (Sq. ft.)
A	3BHK + 2TOI	827	69	896	1019	1323
C	3BHK + 2TOI	827	69	896	1019	1323



## TYPE A - UNIT PLAN FLAT B & D



Flat no.	Flat Type	Carpet Area (Sq. ft.)	Balcony (Sq. ft.)	Total Area (Sq. ft.)	Built up Area (Sq. ft.)	Standard Built Up Area (Sq. ft.)
B	3BHK + 2TOI	816	69	885	1006	1306
D	3BHK + 2TOI	816	69	885	1006	1306

## TYPE A - ISOMETRIC PLAN FLAT B & D



Flat no.	Flat Type	Carpet Area (Sq. ft.)	Balcony (Sq. ft.)	Total Area (Sq. ft.)	Built up Area (Sq. ft.)	Standard Built Up Area (Sq. ft.)
B	3BHK + 2TOI	816	69	885	1006	1306
D	3BHK + 2TOI	816	69	885	1006	1306