

# TYPICAL AREA PLAN





## TYPE C - BLOCK 34 & 35 1ST FLOOR TYPICAL AREA PLAN



Flat no.	Flat Type	Carpet Area (Sq. ft.)	Built up Area (Sq. ft.)	Standard Built Up Area (Sq. ft.)	Terrace Area (Sq.ft.) 50 % Chargeable
A	3BHK+2TOI	751	841	1092	0
B	2BHK+2TOI	615	698	906	116
C	3BHK+2TOI	733	825	1071	116
D	3BHK+2TOI	751	841	1092	0
E	3BHK+2TOI	751	841	1092	0
F	3BHK+2TOI	733	825	1071	116
G	2BHK+2TOI	615	698	906	116
H	3BHK+2TOI	751	841	1092	0

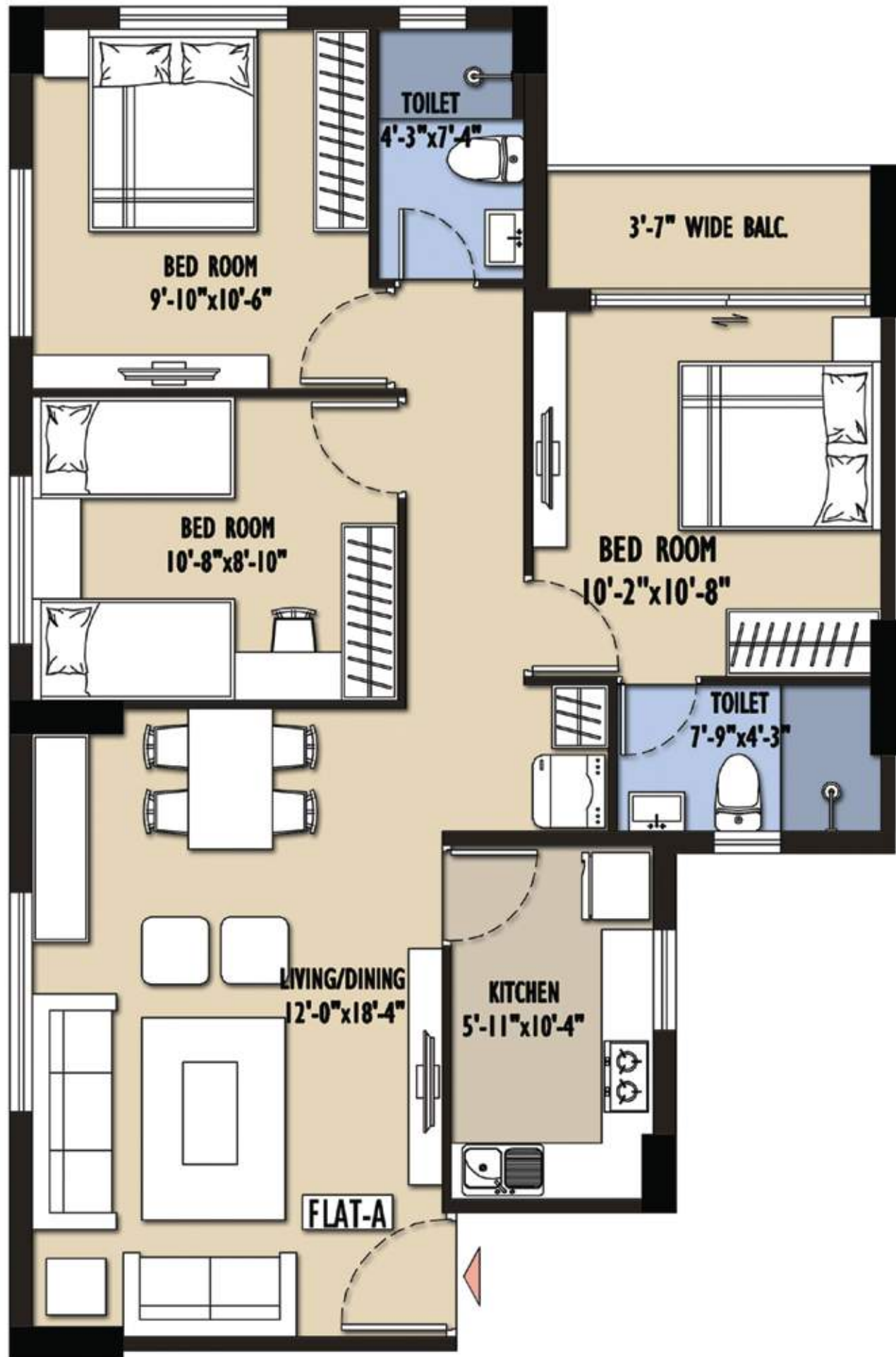


## TYPE C - BLOCK 34 & 35 2ND-12TH FLOOR TYPICAL AREA PLAN



Flat no.	Flat Type	Carpet Area (Sq. ft.)	Built up Area (Sq. ft.)	Standard Built Up Area (Sq. ft.)
A	3BHK+2TOI	751	841	1092
B	2BHK+2TOI	615	698	906
C	3BHK+2TOI	733	825	1071
D	3BHK+2TOI	751	841	1092
E	3BHK+2TOI	751	841	1092
F	3BHK+2TOI	733	825	1071
G	2BHK+2TOI	615	698	906
H	3BHK+2TOI	751	841	1092

TYPE C - UNIT PLAN  
FLAT - A, D, E & H



Flat Type	Carpet Area (Sq. ft.)	Built up Area (Sq. ft.)	Standard Built Up Area (Sq. ft.)
3BHK+2TOI	751	841	1092

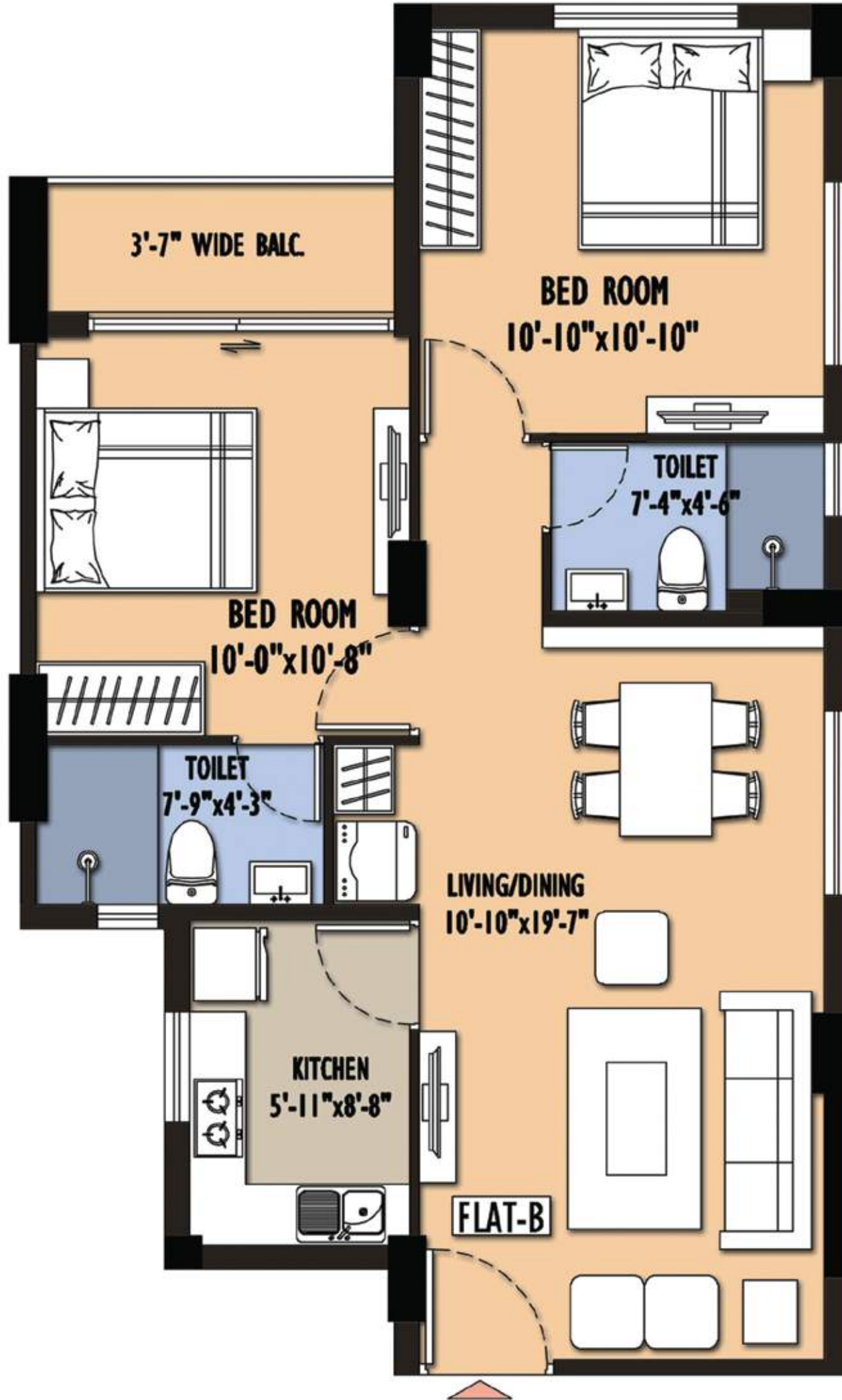


TYPE C - ISOMETRIC PLAN  
FLAT - A, D, E & H



Flat Type	Carpet Area (Sq. ft.)	Built up Area (Sq. ft.)	Standard Built Up Area (Sq. ft.)
3BHK+2TOI	751	841	1092

TYPE C - UNIT PLAN  
FLAT - B & G



Flat Type	Carpet Area (Sq. ft.)	Built up Area (Sq. ft.)	Standard Built Up Area (Sq. ft.)
2BHK+2TOI	615	698	906

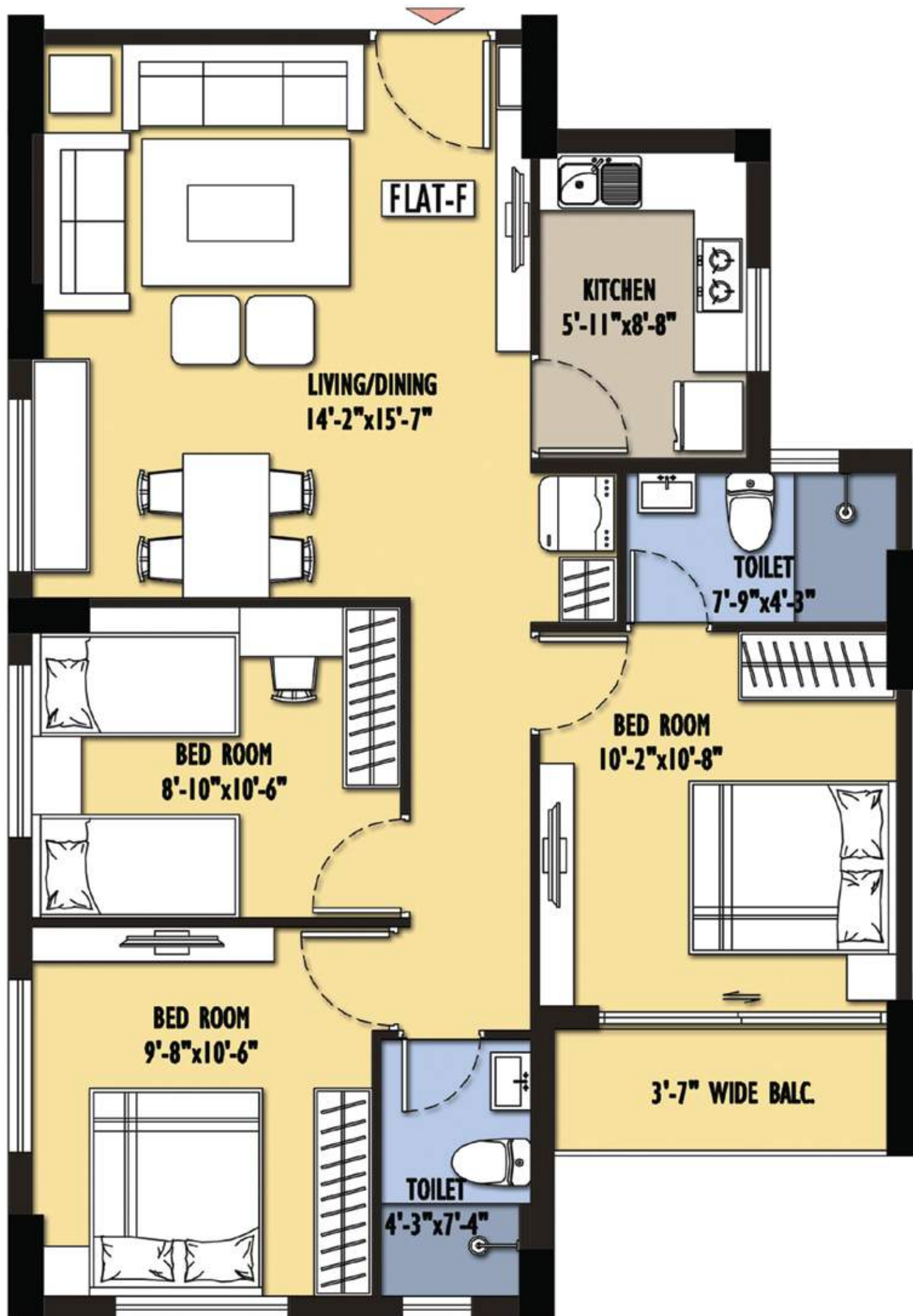


TYPE C - ISOMETRIC PLAN  
FLAT - B & G



Flat Type	Carpet Area (Sq. ft.)	Built up Area (Sq. ft.)	Standard Built Up Area (Sq. ft.)
2BHK+2TOI	615	698	906

TYPE C - UNIT PLAN  
FLAT - F & C



Flat Type	Carpet Area (Sq. ft.)	Built up Area (Sq. ft.)	Standard Built Up Area (Sq. ft.)
3BHK+2TOI	733	825	1071



TYPE C - ISOMETRIC PLAN  
FLAT - F & C



Flat Type	Carpet Area (Sq. ft.)	Built up Area (Sq. ft.)	Standard Built Up Area (Sq. ft.)
3BHK+2TOI	733	825	1071